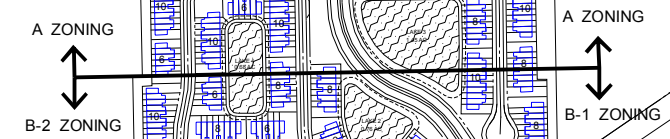
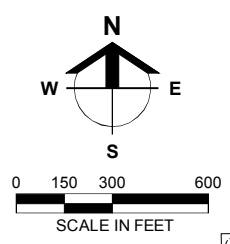
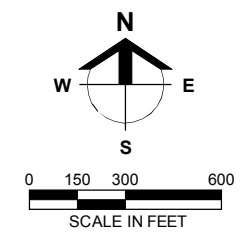
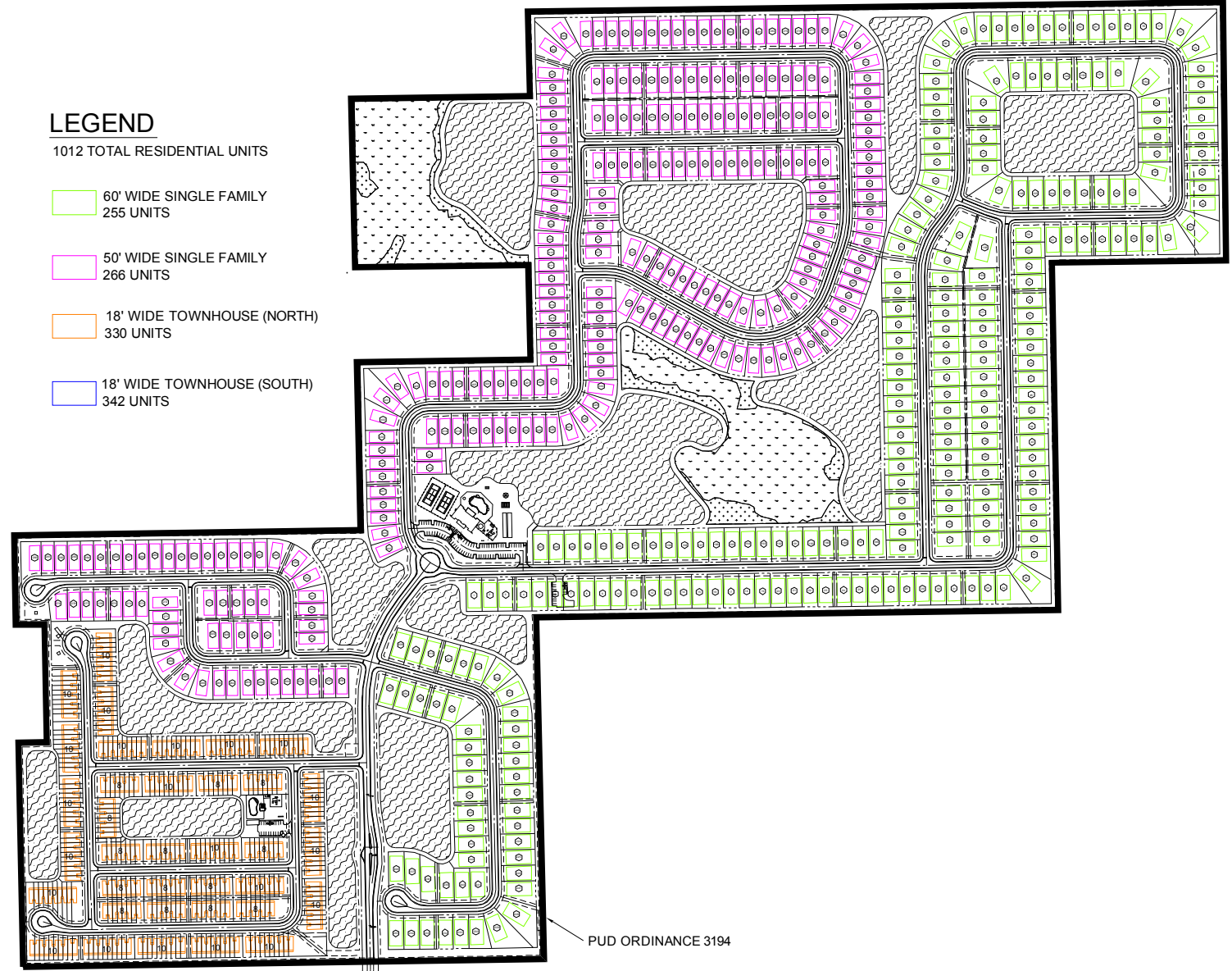


LEGEND

- 1012 TOTAL RESIDENTIAL UNITS
- 60' WIDE SINGLE FAMILY
255 UNITS
- 50' WIDE SINGLE FAMILY
266 UNITS
- 18' WIDE TOWNHOUSE (NORTH)
330 UNITS
- 18' WIDE TOWNHOUSE (SOUTH)
342 UNITS



PUD ORDINANCE 3194

Barraco and Associates, Inc.

CIVIL ENGINEERING - LAND SURVEYING
LAND PLANNING - LANDSCAPE DESIGN
www.barraco.net
2271 MCGREGOR BLVD., SUITE 100
POST OFFICE DRAWER 2800
FORT MYERS, FLORIDA 33902-2800
PHONE (239) 461-3170
FAX (239) 461-3169

FLORIDA CERTIFICATES OF AUTHORIZATION
ENGINEERING 7995 - SURVEYING LB-6940

PREPARED FOR

FALCON GROUP

1951 N.W. 19TH STREET
SUITE 200
BOCA RATON, FL. 33431

PHONE (561) 961-1264
FAX (561) 338-2957

PROJECT DESCRIPTION

WATERFORD LANDING NORTH

PART OF SECTION 32
TOWNSHIP 44 S
RANGE 25 E
CITY OF FORT MYERS
LEE COUNTY, FLORIDA

PROJECT ENGINEER

ENGINEER OF RECORD:
CARL A. BARRACO, P.E.
FOR THE FIRM
2271 MCGREGOR BOULEVARD
FORT MYERS, FLORIDA 33901
FLORIDA P.E. NO. 38538
CARLB@BARRACO.NET

NOT VALID WITHOUT EMBOSSED SEAL, SIGNATURE AND DATE
© COPYRIGHT 2009, BARRACO AND ASSOCIATES, INC.
REPRODUCTION, CHANGES OR ASSIGNMENTS ARE PROHIBITED

FILE NAME	Z2440-X00 PRODUCT MIX 8-11-06.DWG
LAYOUT	LAYOUT1
LOCATION	J:\22440\DWG\EXHIBITS
PLOT DATE	FRI, 3-6-2009 - 3:48 PM
PLOT BY	JAN BILDZUKEWICZ
DESIGN BY	

CROSS REFERENCED DRAWINGS

PLAN REVISIONS

PLAN STATUS

APPROVED FOR CONSTRUCTION
WITH REVISIONS NOTED ABOVE

EXHIBIT "B"

PROJECT / FILE NO.	SHEET NUMBER
22440	1