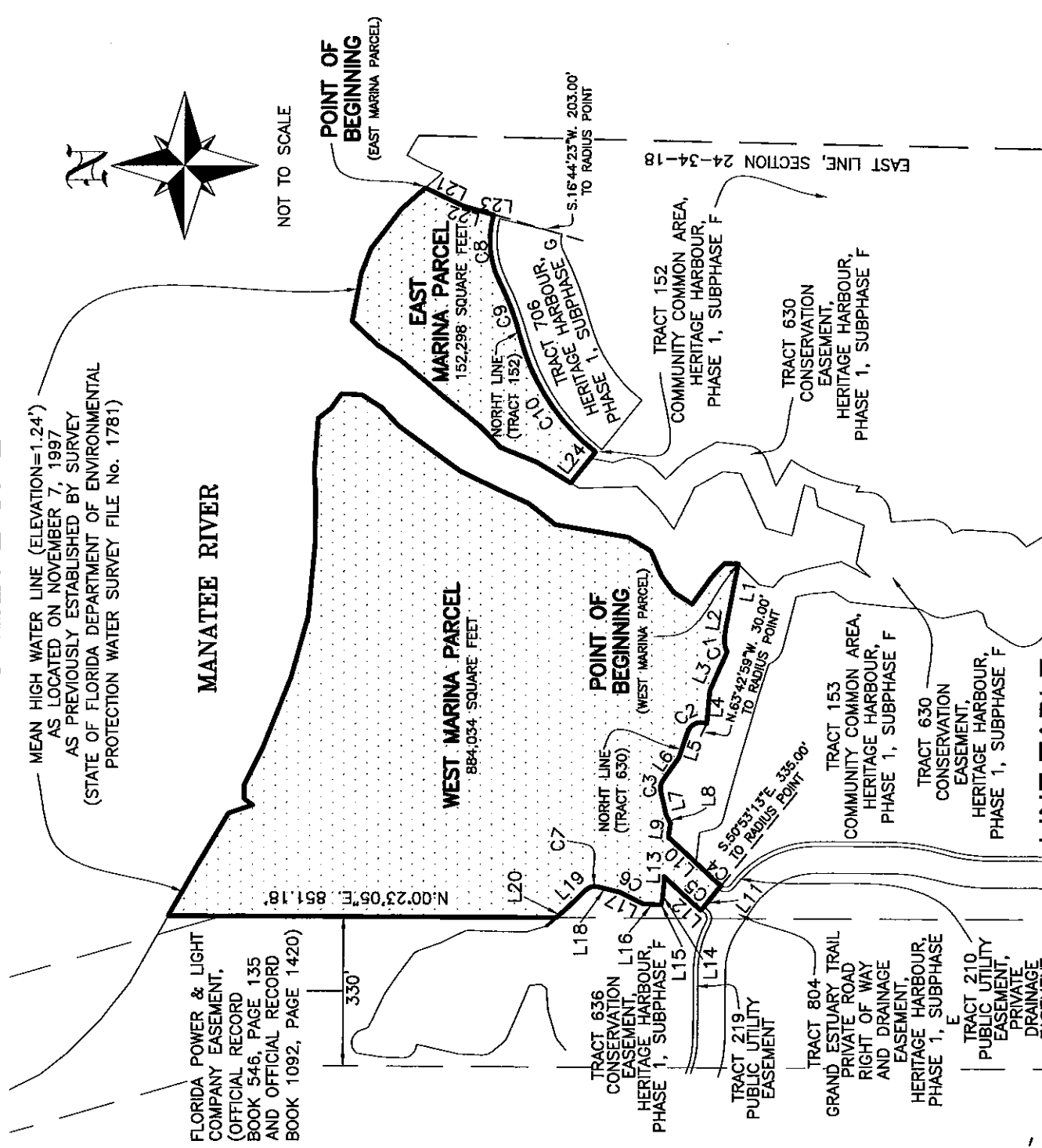


EXHIBIT A DESCRIPTION AND SKETCH

IN SECTION 24, TOWNSHIP 34 SOUTH, RANGE 18 EAST, MANATEE COUNTY, FLORIDA.
 "NOT A BOUNDARY SURVEY"
 SHEET 2 OF 2



LINE TABLE

LINE	BEARING	RADIUS	ARC LENGTH	CHORD LENGTH	DISTANCE
L1	N.78°52'12"W.		32.20'	31.64'	144.45'
L2	N.82°25'39"W.		51.31'	45.28'	21.29'
L3	N.66°11'33"W.		25.03'	24.31'	94.43'
L4	N.84°56'42"W.		19.85'	19.85'	73.55'
L5	N.71°42'41"W.		25.09'	25.09'	59.31'
L6	N.55°06'51"W.		6.65'	6.64'	62.44'
L7	S.77°05'24"W.		30.66'	29.34'	56.73'
L8	S.59°47'40"W.		152.18'	148.64'	18.03'
L9	N.81°25'00"W.		137.14'	136.90'	31.81'
L10	S.43°24'18"W.		304.29'	299.01'	138.96'
L11	N.50°53'13"W.		70.00'	70.00'	70.00'
L12	N.43°24'18"E.		85.33'	85.33'	85.33'

LINE TABLE

LINE	BEARING	DISTANCE
L13	N.87°36'07"W.	20.76'
L14	N.83°50'45"W.	37.65'
L15	N.61°20'56"W.	5.14'
L16	N.02°35'00"E.	38.80'
L17	N.26°59'11"E.	54.15'
L18	N.14°16'42"E.	45.06'
L19	N.44°16'37"W.	59.90'
L20	N.41°19'33"W.	28.19'
L21	S.26°01'24"W.	92.81'
L22	S.16°14'13"W.	63.60'
L23	S.07°03'24"W.	6.08'
L24	N.51°38'21"W.	87.17'

CURVE TABLE

CURVE	RADIUS	ARC LENGTH	CHORD LENGTH	CHORD BEARING	DELTA ANGLE
C1	50.00'	32.20'	31.64'	S.79°07'31"W.	36°53'44"
C2	30.00'	51.31'	45.28'	N.22°42'50"W.	97°59'42"
C3	30.00'	25.03'	24.31'	N.79°00'44"W.	47°47'45"
C4	265.00'	19.85'	19.85'	S.41°15'33"W.	04°17'31"
C5	335.00'	25.09'	25.09'	N.41°15'33"E.	04°17'31"
C6	30.00'	6.65'	6.64'	N.20°37'57"E.	12°42'29"
C7	30.00'	30.66'	29.34'	N.14°59'57"W.	58°33'19"
C8	203.00'	152.18'	148.64'	S.85°15'49"W.	42°57'09"
C9	673.37'	137.14'	136.90'	S.69°37'18"W.	11°40'07"
C10	470.00'	304.29'	299.01'	S.56°54'30"W.	37°05'42"

THIS SKETCH IS NOT VALID UNLESS ACCOMPANIED BY SHEET 1 OF 2 HAVING THE SIGNATURE AND THE ORIGINAL RAISED SEAL OF A FLORIDA LICENSED SURVEYOR AND MAPPER AFFIXED THERETO.
 DRAWN BY: CAS
 SKETCH DATE: 09-20-06
 PROJECT NUMBER: 6040-MAR
 DATE: _____
 REVISIONS: _____
 BY: CHK'D

Banks Engineering
 Professional Engineers, Planners & Land Surveyors
 SARASOTA - ANNA MARIA - FORT MYERS - NAPLES
 1144 TALLEVAST ROAD, SUITE 115, SARASOTA FLORIDA 34243 (941)360-1618 FAX(941)360-6918