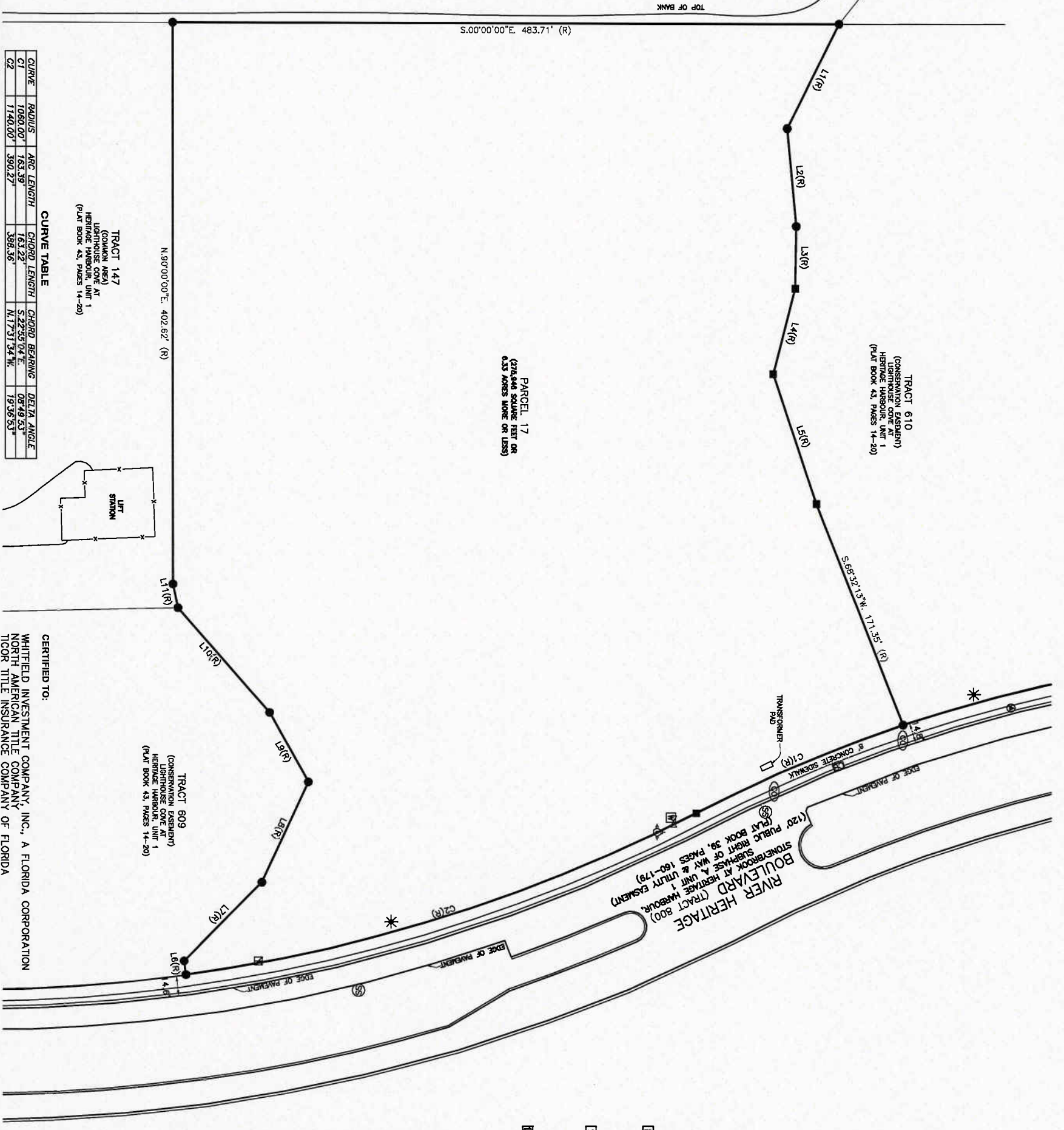


TRACT 115
(COMMON AREA)
LIGHTHOUSE COVE AT
HERITAGE HARBOUR, UNIT 1
(PLAT BOOK 43, PAGES 14-20)

TRACT 610
(CONSERVATION EASEMENT)
LIGHTHOUSE COVE AT
HERITAGE HARBOUR, UNIT 1
(PLAT BOOK 43, PAGES 14-20)

TRACT 514
(LAKE AND DRAINAGE EASEMENT)
LIGHTHOUSE COVE AT
HERITAGE HARBOUR, UNIT 1
(PLAT BOOK 43, PAGES 14-20)

PARCEL 17
(270,844 SQUARE FEET OR
6.33 ACRES MORE OR LESS)



LEGEND

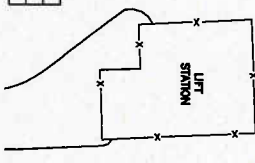
- CONCRETE MONUMENT
- IRON ROD
- WATER METER
- CLEAN OUT
- WATER VALVE
- * UNDERGROUND FIBER OPTIC WIRE
- SANITARY MANHOLE
- FIRE HYDRANT
- IRRIGATION VALVE
- CATCH BASIN

LINE TABLE

LINE	BEARING	DISTANCE
L1	N63°12'41"W	83.42
L2	S84°42'31"W	70.61
L3	N69°13'38"W	44.72
L4	N75°24'50"W	63.74
L5	S71°27'06"W	98.25
L6	N82°16'32"E	10.07
L7	S4°55'42"E	79.98
L8	S65°07'02"E	80.12
L9	N60°39'30"E	57.32
L10	N46°31'56"E	100.30
L11	N77°59'30"E	17.88

CURVE TABLE

CURVE	RADIUS	ARC LENGTH	CHORD LENGTH	CHORD BEARING	DELTA ANGLE
C1	1060.00'	163.39'	163.22'	S22°55'04"E	08°49'53"
C2	1140.00'	360.27'	366.36'	N17°31'54"W	19°56'53"



CERTIFIED TO:
 WHITFIELD INVESTMENT COMPANY, INC., A FLORIDA CORPORATION
 NORTH AMERICAN TITLE COMPANY
 TICOR TITLE INSURANCE COMPANY OF FLORIDA

TRACT 609
(CONSERVATION EASEMENT)
 LIGHTHOUSE COVE AT
 HERITAGE HARBOUR, UNIT 1
 (PLAT BOOK 43, PAGES 14-20)

LEGAL DESCRIPTION
 (AS FURNISHED)

THAT PART OF SECTION 26, TOWNSHIP 34 SOUTH, RANGE 18 EAST, MANATEE COUNTY, FLORIDA BEING MORE PARTICULARLY DESCRIBED AS FOLLOWS:

COMMENCE AT THE NORTHWEST CORNER OF THE AFOREMENTIONED SECTION 26, THENCE ALONG THE NORTH LINE OF SAID SECTION 26, S.88°23'50"E, A DISTANCE OF 4489.24 FEET; THENCE S.01°36'10"W, LEAVING SAID NORTH LINE, A DISTANCE OF 888.44 FEET TO THE POINT OF BEGINNING; THENCE S.63°12'41"E, A DISTANCE OF 83.42 FEET; THENCE N.64°42'31"E, A DISTANCE OF 70.61 FEET; THENCE S.69°13'38"E, A DISTANCE OF 44.72 FEET; THENCE S.75°24'50"E, A DISTANCE OF 63.74 FEET; THENCE N.71°27'06"E, A DISTANCE OF 98.25 FEET; THENCE N.82°16'32"W, A DISTANCE OF 171.35 FEET TO A POINT ON THE WEST RIGHT OF WAY LINE OF RIVER HERITAGE BOULEVARD AS RECORDED IN PLAT BOOK 38, PAGE 160, PUBLIC RECORDS OF MANATEE COUNTY, FLORIDA; SAID POINT ALSO BEING A POINT ON A CURVE CONVEX TO THE NORTHEAST IN WHICH THE RADIAL POINT LIES N.71°29'52"E, WITH A RADIUS OF 1060.00 FEET AND A DELTA ANGLE OF 08°49'53"; THENCE ALONG SAID CURVE IN A SOUTHERLY AND COUNTER CLOCKWISE DIRECTION, A DISTANCE OF 163.39 FEET TO THE BEGINNING OF A REVERSE CURVE CONVEX TO THE WEST, HAVING A RADIUS OF 1140.00 FEET AND A DELTA ANGLE OF 19°56'53"; THENCE ALONG SAID CURVE IN A SOUTHERLY AND COUNTER CLOCKWISE DIRECTION, A DISTANCE OF 360.27 FEET; THENCE LEAVING SAID CURVE AND ALONG A BOUNDARY LINE SHOWN ON THE PLAT OF LIGHTHOUSE COVE AT HERITAGE HARBOUR, UNIT 1 AS RECORDED IN PLAT BOOK 43, PAGE 14, PUBLIC RECORDS OF MANATEE COUNTY, FLORIDA; THENCE S.82°16'32"W, A DISTANCE OF 10.07 FEET; THENCE N.44°55'42"W, A DISTANCE OF 79.98 FEET; THENCE N.65°07'02"W, A DISTANCE OF 80.12 FEET; THENCE S.60°39'30"W, A DISTANCE OF 57.32 FEET; THENCE S.48°31'56"W, A DISTANCE OF 100.30 FEET; THENCE S.77°59'30"W, A DISTANCE OF 17.88 FEET; THENCE S.80°00'00"W, A DISTANCE OF 483.70 FEET TO THE POINT OF BEGINNING.

SURVEYORS CERTIFICATE (DATE OF FIELD SURVEY: 08/19/08)

I, JEFFREY L. HOSSTLER, HEREBY CERTIFY THAT THIS SKETCH OR THE SURVEY REPRESENTED HEREON MEETS THE MINIMUM TECHNICAL STANDARDS FOR SURVEYING IN THE STATE OF FLORIDA AS SET FORTH BY THE FLORIDA BOARD OF LAND SURVEYORS, PURSUANT TO CHAPTER 472 OF THE FLORIDA STATUTES AND CHAPTER 61.017-6 OF THE FLORIDA ADMINISTRATIVE CODE.

JEFFREY L. HOSSTLER, P.S.M.
 REGISTERED PROFESSIONAL SURVEYOR AND MAPPER
 THIS STATE OF FLORIDA LICENSE NO. 4911
 WAS ISSUED TO ME ON 08/19/08 AND IS VALID UNTIL 08/19/14.
 I HAVE REVIEWED THE ORIGINAL RECORDS OF THIS SURVEY AND THE ORIGINAL
 RAISED SEAL OF A FLORIDA LICENSED SURVEYOR AND MAPPER

BOUNDARY SURVEY

IN SECTION 26, TOWNSHIP 34 SOUTH, RANGE 18 EAST,
 MANATEE COUNTY, FLORIDA
 HERITAGE HARBOUR - PARCEL 17



Banka Engineering
 Professional Engineers, Planners & Land Surveyors
 State of Florida Licensed Business #18 6890
 1144 WILKINSON ROAD, SUITE 118
 SARASOTA, FLORIDA 34243
 PHONE: (941)360-1616
 FAX: (941)360-6818

WHITFIELD INVESTMENT COMPANY
 310 WHITFIELD AVENUE
 SARASOTA, FLORIDA 34243

SURVEYOR'S NOTES

- 1) THIS SKETCH WAS PREPARED FOR THE EXCLUSIVE USE OF THE PERSONS AND OR ENTITIES LISTED HEREON.
- 2) SOME IMPROVEMENTS SUCH AS, BUT NOT LIMITED TO, SURFACE DRAINAGE, SUBSURFACE IMPROVEMENTS, LANDSCAPE FEATURES, INTERIOR FENCES, AND OTHER ITEMS NOT RELATED TO THE PURPOSE OF THIS SURVEY, ARE NOT SHOWN ON THIS SKETCH UNLESS OTHERWISE INDICATED.
- 3) DIMENSIONS, DATA REFERENCED HEREON ARE EXPRESSED IN FEET AND DECIMALS THEREOF AND ARE CONSISTENT WITH RECORDED DATA UNLESS OTHERWISE INDICATED.
- 4) FIELD LOCATIONS OF EXISTING IMPROVEMENTS AND PROPERTY LINES WERE REFERENCED TO EXISTING SURVEY MONUMENTS AND RECORDS THAT ARE NOT SHOWN ON THIS SKETCH THAT MAY BE FOUND IN THE PUBLIC RECORDS OF THIS COUNTY.
- 5) THIS SKETCH WAS NOT INTENDED TO BE USED FOR APPLICATION OF A BUILDING PERMIT WITH ANY ZONING ORDINANCES OR ANY OTHER REGULATORY AGENCIES.
- 6) DIMENSIONS ARE BASED ON THE WESTERN BOUNDARY OF RIVER HERITAGE BOULEVARD BEING N.23°13'41"E AS RECORDED ON PLAT OF STONEBROOK AT HERITAGE HARBOUR, SUBDIVISION A, UNIT 1, PLAT BOOK 38, PAGES 160-176, OF THE PUBLIC RECORDS OF MANATEE COUNTY, FLORIDA.
- 7) THE LEGAL DESCRIPTION AS SHOWN HEREON DESCRIBES THE SAME PROPERTY AS THE LEGAL DESCRIPTION AS SHOWN ON PLAT OF STONEBROOK AT HERITAGE HARBOUR, SUBDIVISION A, UNIT 1, PLAT BOOK 38, PAGES 160-176, OF THE PUBLIC RECORDS OF MANATEE COUNTY, FLORIDA.
- 8) THE LEGAL DESCRIPTION AS SHOWN HEREON DESCRIBES THE SAME PROPERTY AS THE LEGAL DESCRIPTION AS SHOWN ON PLAT OF STONEBROOK AT HERITAGE HARBOUR, SUBDIVISION A, UNIT 1, PLAT BOOK 38, PAGES 160-176, OF THE PUBLIC RECORDS OF MANATEE COUNTY, FLORIDA.
- 9) THE LEGAL DESCRIPTION AS SHOWN HEREON DESCRIBES THE SAME PROPERTY AS THE LEGAL DESCRIPTION AS SHOWN ON PLAT OF STONEBROOK AT HERITAGE HARBOUR, SUBDIVISION A, UNIT 1, PLAT BOOK 38, PAGES 160-176, OF THE PUBLIC RECORDS OF MANATEE COUNTY, FLORIDA.
- 10) THE LEGAL DESCRIPTION AS SHOWN HEREON DESCRIBES THE SAME PROPERTY AS THE LEGAL DESCRIPTION AS SHOWN ON PLAT OF STONEBROOK AT HERITAGE HARBOUR, SUBDIVISION A, UNIT 1, PLAT BOOK 38, PAGES 160-176, OF THE PUBLIC RECORDS OF MANATEE COUNTY, FLORIDA.
- 11) THE LEGAL DESCRIPTION AS SHOWN HEREON DESCRIBES THE SAME PROPERTY AS THE LEGAL DESCRIPTION AS SHOWN ON PLAT OF STONEBROOK AT HERITAGE HARBOUR, SUBDIVISION A, UNIT 1, PLAT BOOK 38, PAGES 160-176, OF THE PUBLIC RECORDS OF MANATEE COUNTY, FLORIDA.

NOTES CORRESPONDING TO SCHEDULE B, SECTION 2 EXCEPTIONS (AS FURNISHED)

NORTH AMERICAN TITLE COMPANY TITLE COMMITMENT ORDER NUMBER 157000191, ISSUED JUNE 30, 2006, AT 8:00 AM.

THE FOLLOWING EXCEPTIONS LISTED ON POLICY HAVE BEEN REVIEWED OR OTHERWISE DEPICTED ON THE SURVEY SKETCH:

- 1) ORDINANCE NO. G-19, DEVELOPMENT OF REGIONAL IMPACT FOR HERITAGE SOUND, RECORDED IN OFFICIAL RECORDS BOOK 1730, PAGE 1835, OF THE PUBLIC RECORDS OF MANATEE COUNTY, FLORIDA, AND ADOPTION OF DEVELOPMENT ORDER RECORDED IN OFFICIAL RECORDS BOOK 1736, PAGE 7147, OF THE PUBLIC RECORDS OF MANATEE COUNTY, FLORIDA.
- 2) THE SUBJECT PROPERTY IS WITHIN THE BOUNDARY OF THE AREA DESCRIBED IN THE ADOPTED/REPEALED OFFICIAL RECORDS AND NOT GEOGRAPHICALLY IDENTICAL.
- 3) THE PROPERTY LIES WITHIN THE BOUNDARIES OF THE HERITAGE HARBOUR SOUTH COMMUNITY DEVELOPMENT DISTRICTS AS ENDED BY THESE CERTAIN DOCUMENTS RECORDED IN OFFICIAL RECORDS BOOK 1718, PAGE 779 AND OFFICIAL RECORDS BOOK 1719, PAGE 780, OF THE PUBLIC RECORDS OF MANATEE COUNTY, FLORIDA.
- 4) THE SUBJECT PROPERTY IS WITHIN THE BOUNDARY OF THE AREA DESCRIBED IN THE ADOPTED/REPEALED OFFICIAL RECORDS AND NOT GEOGRAPHICALLY IDENTICAL.
- 5) THE PROPERTY LIES WITHIN THE BOUNDARIES OF THE HERITAGE HARBOUR SOUTH COMMUNITY DEVELOPMENT DISTRICTS AS ENDED BY THESE CERTAIN DOCUMENTS RECORDED IN OFFICIAL RECORDS BOOK 1718, PAGE 779 AND OFFICIAL RECORDS BOOK 1719, PAGE 780, OF THE PUBLIC RECORDS OF MANATEE COUNTY, FLORIDA.
- 6) THE SUBJECT PROPERTY IS WITHIN THE BOUNDARY OF THE AREA DESCRIBED IN THE ADOPTED/REPEALED OFFICIAL RECORDS AND NOT GEOGRAPHICALLY IDENTICAL.
- 7) RESTRICTIONS, RESERVATIONS, COVENANTS AND CONDITIONS PURSUANT TO THAT CERTAIN INSTRUMENT RECORDED IN OFFICIAL RECORDS BOOK 2082, 1828, OF THE PUBLIC RECORDS OF MANATEE COUNTY, FLORIDA, AS TO PARCELS 17, 18, 20, 23, 24, AND 25.
- 8) THE SUBJECT PROPERTY IS WITHIN THE BOUNDARY OF THE AREA DESCRIBED IN THE ADOPTED/REPEALED OFFICIAL RECORDS AND NOT GEOGRAPHICALLY IDENTICAL.

